

August Newsletter

8/16/2021 | Issue 18

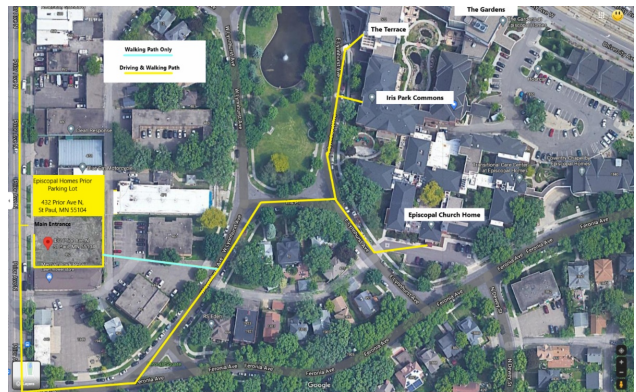


Mission Monthly

a monthly newsletter for employees of Episcopal Homes

New Parking Lot!

We have a new parking area for employees. This lot is at 432 Prior Ave, meaning no more crossing University Ave.



Meet our Fall 2021 Scholarship Winners

In July, Episcopal Homes Foundation awarded five outstanding employees educational scholarships to begin using during the fall academic semester. We are so excited to support this group of students in their education. [Meet the winners here](#)



Vaccine Clinic

On Tuesday, August 24 from 10:00am-11:00am will be holding a vaccine clinic.

Please let your supervisor or manager know if you would like to be vaccinated at this clinic. A friendly reminder that all staff need at least their first shot by Sept. 1 in order to remain employed at Episcopal Homes. Still hesitant? Ask us any questions you might have.



Employee Emergency Assistance Program

On **July 1, 2021**, Episcopal Homes Foundation launched the Employee Emergency Assistance program. This program is designed to support staff whose ability to get to work or perform their duties effectively while at work is hindered by a temporary financial crisis.

There are two forms of emergency assistance you can request:

- Emergency food, transit/fuel, or prescription support of **up to \$100 per year**.
- Emergency debt relief, such as to support medical, housing, or transportation emergencies of **up to \$750 per year**.

This program is supported by contributions from residents, families, staff, Episcopal Homes' business partners, and other community members. **For this reason, not all requests can or will be approved.**

You are a part of the Episcopal Homes family. We are here for you in times of need. To see more information on this program and to apply, visit <https://www.employees.episcopalhomes.org/emergencyassistance>.

If you have questions, please contact your manager or Human Resources.

[Refer a friend, get rewarded!](#)

Employee Anniversaries Thank you for your commitment!

One Year

Antonia Taylor
Juliet Moore
Kyra Crowston
Juliana Seltz

Two Years

Abdiya Adan
Tina Hellman
Mosunmola Abedigba
Leslie Lottin
Sophie Peterson
Marian Tolbert-Conto
Garmai Flomo
Destiny Tate

Welcome to our New Hires We are so glad you're here!

Human Resources
Mychelle Bridgeford

Shahbaz
Yewubdar Tesfaye
Jahleah Young

Culinary
Miguel Garibay
Mitchell Kowitz
Filiberto Unzueta Jr.
Tad Dixon

CNA and HHA
Lul Abdi

Michael Patterson
Laquan Burks
Sandra Hauer
Karen Vento

Three Years

Brigitte Byakweli
Kuftu Koji
Christine Sullivan
Wesen Lebu
Catherine Gnali

Four Years

Hiwot Fundusa
Oluwagbenga Opadotun
Woinhareg Wolderufael
Kirsnesh Weldemedhn
Frances Verdier

Five Years

Khadeja Stringer
Trevor Thompson
Leah Bluhm
Benjamin Agyemang

Six Years

Rev. Phil Rose

Seven Years

Hadija Brandin
Chidi Ibekwe
Maldeberthe Hatungimana

Eight Years

Chika Ezike
Mohamed Turay
Lulit Zeleke
Kristen Vann
Monquita Young
William Briggs
Patrick McGuire

Nine Years

Molly Zevounou
Conceicao Dias

14 Years

Helen Nnabuchionye

20 Years

Luann Wolf

24 Years

Mark Ladwig
Heidi Elmquist

27 Years

Abigail Ashamu

Tara Buck
Saquan Mitchell
Ke'andria Green

Homemakers and Housekeepers

Pamela Vankirk
Garibe Gisho
Shamule Hayato
Sitina Ayub

Life Enhancement

Wendy Williams

LPN

Jennifer Phillipi
Liela Dennis

Carty Heights Manager

Denise Eichler

NAR

Rihana Jafer
Lillie Moyano
Shakhaila Whyte
Tusa Tufa
Tonya Duncan

Basic Care Aide

Ikran Abdirahman
Kalle Wittwer
Yorsalem Gebrehiwot

Staffing Assistant

Odur Onyongo

Connect with your teammates on Facebook!

Employees of Episcopal Homes

Are you a part of our employee
Facebook group?

[Join the Group!](#)



Episcopal Homes of Minnesota
www.employees.episcopalhomes.org

